

Broadway® 3D

Walk through identification

The Broadway® 3D is the first device in the world capable of visually identifying a person as easily as humans identify each other. Identification takes a split second. Walk or even run past, simply glance at the device and it will “remember” and recognize the identity of one of the tens of thousands previously registered people.

Similar to humans, the device is equipped with a 3D vision system, which “remembers” the unique three-dimensional shape of the face. Unlike human vision, however, the device is able to differentiate nuanced geometry with accuracy of up to fractions of a millimeter, enabling it to tell apart identical twins and making the Broadway® 3D one of the most accurate biometric devices.

Purpose

The Broadway® 3D can be used to increase the effectiveness of Access Control Systems (ACS) in conjunction with any doors, electric locks, gates, turnstiles and other devices.

Moreover, the device can be used with ATMs, electronic information kiosks, payment terminal, customer loyalty program stations for identity authorization, etc.

Reliability

The Broadway® 3D currently provides the highest security level of access control. Access is granted only if there is a match between the person’s face and his stored 3D image in the database. Recording of the 3D image allows for statistics data gathering and detection of unauthorized access attempts. The Broadway® 3D will not be fooled by a user in make up or a stolen badge or keycard. This device eradicates the “human factor” mistakes, for instance, when a security guard’s attention diminishes due to an influx of people at the ACS.

Ease of Use

Unlike the other biometrics, the 3D face doesn’t require direct physical contact or exact positioning in front of the identification device. The Broadway® 3D identifies walking or even running people regardless of their age or height.

Safeguarding personal information

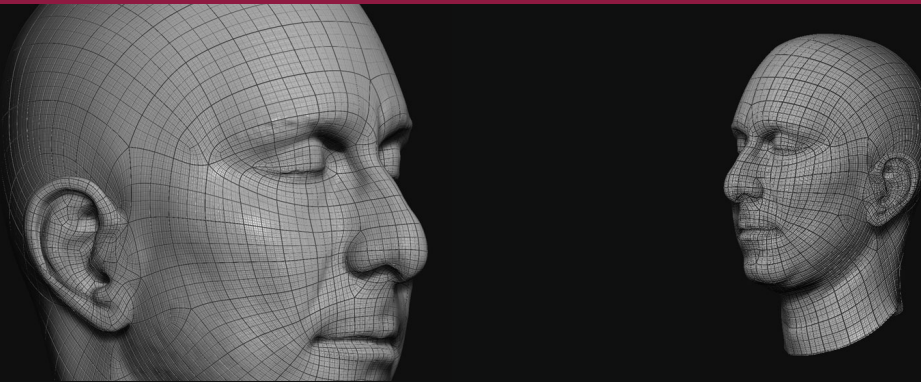
Most biometric methods require the storage of personal information, which people usually do not share with others in their daily lives (fingerprints, retina and iris scans, etc). This leads to a viable risk of identity theft where personal data is used against the person (biometric falsification to attain unauthorized access or fabricate evidence in a court of law, access to personal medical data, etc).

Unlike other biometrics, 3D face identification doesn’t carry the risk of private data being used against the person since the geometric dimensions of a face is “public information”. That information is used in most identification methods in a form of a photograph.



Artec ID

3D Face Recognition Technology



Moreover, the use of a dynamic 3D image of the face eliminates the risk of falsification almost entirely.

A time saver

The Broadway® 3D capacity reaches up to 60 people per minute even with large databases (>10,000 enrollees). This increases the throughput capacity of any checkpoint or gate, and makes keycards and badges obsolete all the while retaining a high level of security.

Protection against loss or theft of a badge

In cases where keycards or badges are used, the Broadway® 3D protects against an unsanctioned use of stolen, lost or transferred cards. When granting access, the device not only checks the authenticity of the card itself, but also the identify of the person using the card.

Work hours audit

The Broadway® 3D allows you to automate and enhance employee attendance record keeping systems and eliminates the danger of falsification.

Simple Integration

The Broadway® 3D quickly and easily integrates into an existing access control system (ACS). There is no need to change the current ACS or get rid of badges/key cards. Each user can chose a scenario that works best for their company.

Main Characteristics

- Contactless identification
- Identification in motion
- High-quality 3D measurements of human face
- Fast recognition with hats and sunglasses
- Unlimited Database
- Visual indication of mode
- Simple integration
- No hazardous radiation emission
- Light source: *flash bulb (no laser)*
- Recognition time, *less than 1 s*
- Enrollment time, *less than 3 s*
- Biometric template size: *3.5 Kb*
- Self-sufficient throughput capacity: *up to 60 people per minute*
- Throughput capacity with a turnstile: *up to 30 people per minute*
- Walking speed, *up to 5 mph*
- Working distance: *0.8 – 1.6 m*
- User Interface: *Wiegand in/out, Relay*
- Administration Interfaces: *Ethernet 100 Mbps, USB 2.0*
- Video frame rate, *up to 15 fps*
- Angular field of view, HxW: *41x32°*
- Exposure time: *0.2 ms*
- Dimensions, HxDxW: *1623 x 230 x 230 mm*
- Weight: *13 kg*

Artec Group, Inc.

www.artecid.com
www.artec-group.com